



LASER

OUR MARKING WORKSTATIONS

Catalog



The mark of quality



LASER TECHNOLOGY: FAST AND HIGH QUALITY MARKING ON ALL MATERIAL!

To meet the ISO quality requirements, traceability is essential. This is the reason why laser marking is used by manufacturers to automate marking operations and thus guarantee 100% control of their processes.

This laser marking technology consists of releasing radiation from an emitting source. It is then amplified through an optical fiber and directed through a galvanometric head toward the part to be marked. The beam focused on the material by the lens creates a marking chemical reaction.

SIC Marking's fiber laser doped with Ytterbium is a latest generation technology. It is highly performant, reliable, easy to set-up and without maintenance cost. This technology is mainly used for direct marking on all types of materials, from plastic to metal parts, irrespective of their hardness or surface finish. The laser makes it possible to carry out quality marking in a reduced cycle time.



OUR LASER WORKSTATIONS

SIC Marking's powerful and precise laser technology is the key behind our laser marking workstations. They can be integrated directly into production lines, or operated as stand-alone, autonomous workstations. Versatile and user friendly, these machines are suited to both low and high rates of production, and can be customized with additional features and tooling. Resizing the housing, manufacturing dedicated tooling systems, or adding extra axes (e.g. Z and rotary) can be made upon request.

+ ROBUSTNESS AND RELIABILITY

- Long-life components ($\geq 100\,000$ h)
- Reduced maintenance
- 2-year warranty (5 years in option)

+ HIGH PERFORMANCE

- Marking on all types of material and difficult surface conditions
- Surface or hollow marking
- 1D or 2D codes (Data Matrix, QR Code) marking
- Images or vector logos marking
- Decorative marking
- Deep marking

+ SECURITY

- Class 1 security laser (EN 60825-1 standard)

+ USER-FRIENDLY

- Ergonomic door: soft opening
- Access to the marking zone from 3 sides
- Large viewing window
- Reduced width for improved ease of use
- Easy marking height adjustment thanks to a vertical axis

+ FIBER LASER

- Doped Ytterbium fiber laser source
- Fast and high quality marking

A RANGE OF MODULAR LASER MARKING STATIONS

•L-Box, XL-Box & XXL-Box workstations:



Marking windows - 60 x 60*mm - 100 x 100 mm - 170 x 170 mm - 220 x 220*mm - 300 x 300*mm (*contact us)

Easy 20-30W

Excellent value for money
Marking on all types of material
and difficult surface conditions

Easy 50W

Deep engraving
Ultra fast marking

HD 20W

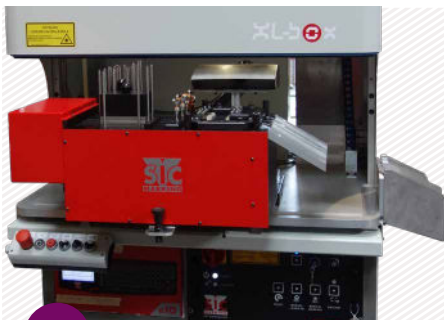
Multi material (ideal for aluminums
and plastics...)
Reduced cycle time

 **VERSATILITY**

 **HIGH POWER**

 **HIGH CONTRAST**

CUSTOM MADE SOLUTIONS



Laser station equipped with an
automatic tag feeder



Laser station equipped
with a turntable



Laser station for large
dimension parts

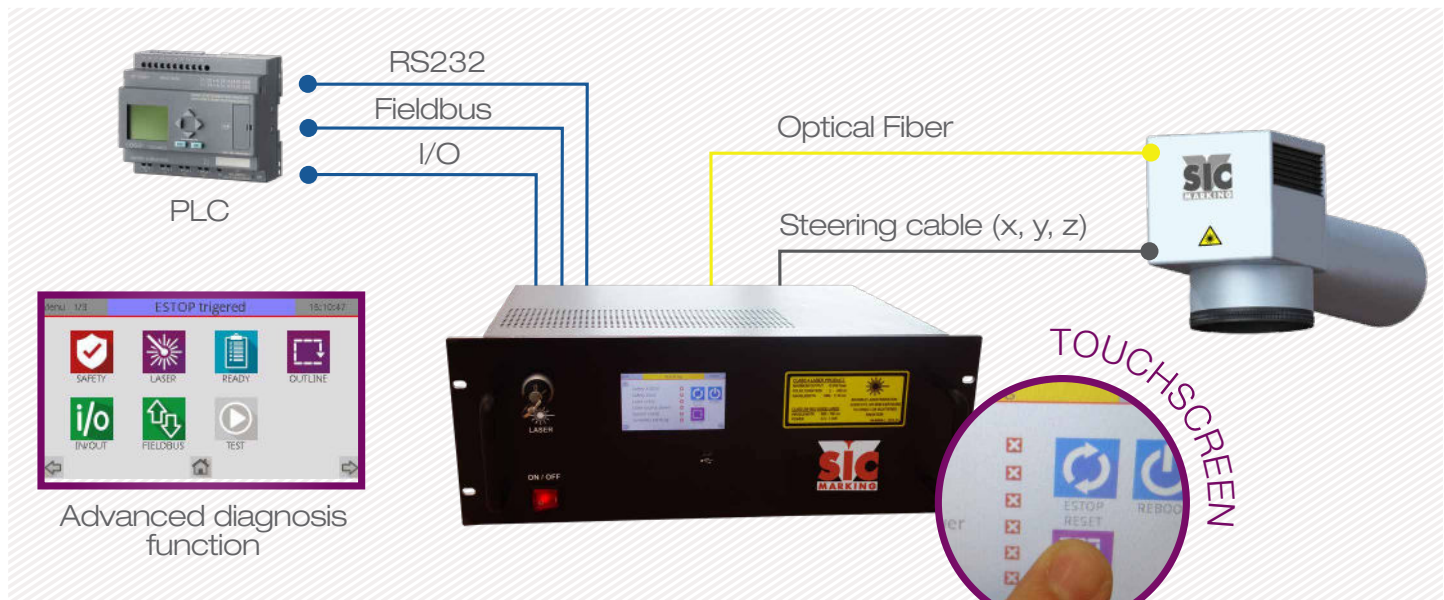
ROBOT MODE

XL-Box laser workstation integrated into a robotic cell.
Entirely operated by the robotic cell's PLC (part loading,
part unloading, control of sub-assemblies...).

The XL-Box station provides marking and reading of
parts (datamatrix code).



THE FIBER UNIT



PLC

RS232

Fieldbus

I/O

Optical Fiber

Steering cable (x, y, z)

Advanced diagnosis function

TOUCHSCREEN

+ TECHNOLOGY & DESIGN

- Operating method: pulsed (variable frequency)
- Consumption: 750 W
- Wavelength: 1 064 nm
- Digital axis control (linear and rotary)
- Ultra compact: 4U height (177mm)

+ COMMUNICATION CARDS (optional)

EtherNet/IP

PROFI[®] NET

PROFI[®] BUS

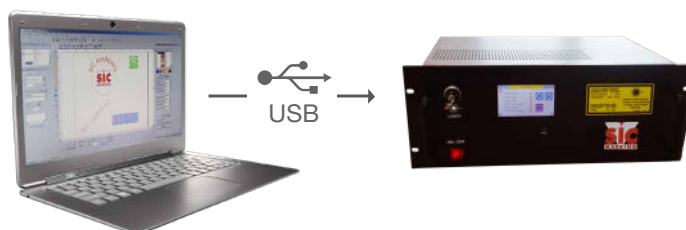
+ RELIABILITY & PERFORMANCE

- Long-life components ($\geq 100\,000$ h)
- Self diagnosis function
- Cooling: only with fans
- Warranty: 2 years (5 years optional)

+ OPERATING

- Laser driven by «SIC LASER» software
- USB interface, Windows environment
- User-friendly interface with icons navigation

• Programming mode:



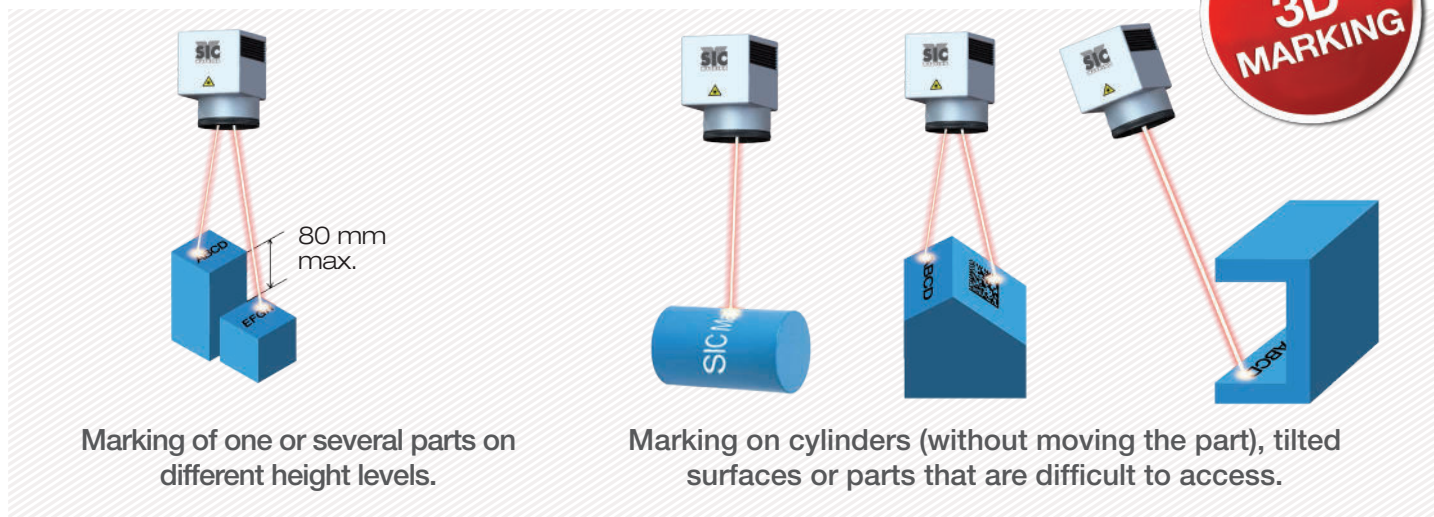
- Creation of entities to be marked: characters, logos, 1D or 2D codes
- Font choice «True Type»
- Pen complete parameter settings

• Production mode:



PLC

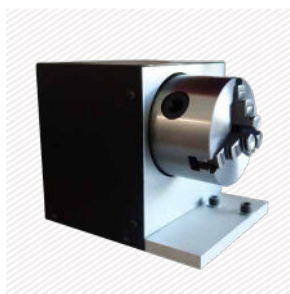
3D MARKING FUNCTION



INTEGRATED VISION SYSTEM



ACCESSORIES



Divider rotary axis



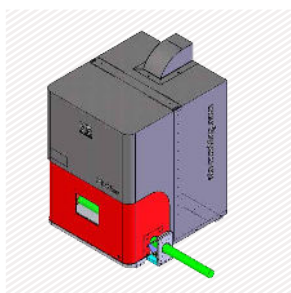
Motorized Z axis



Extraction and filtration systems



Manual turntable



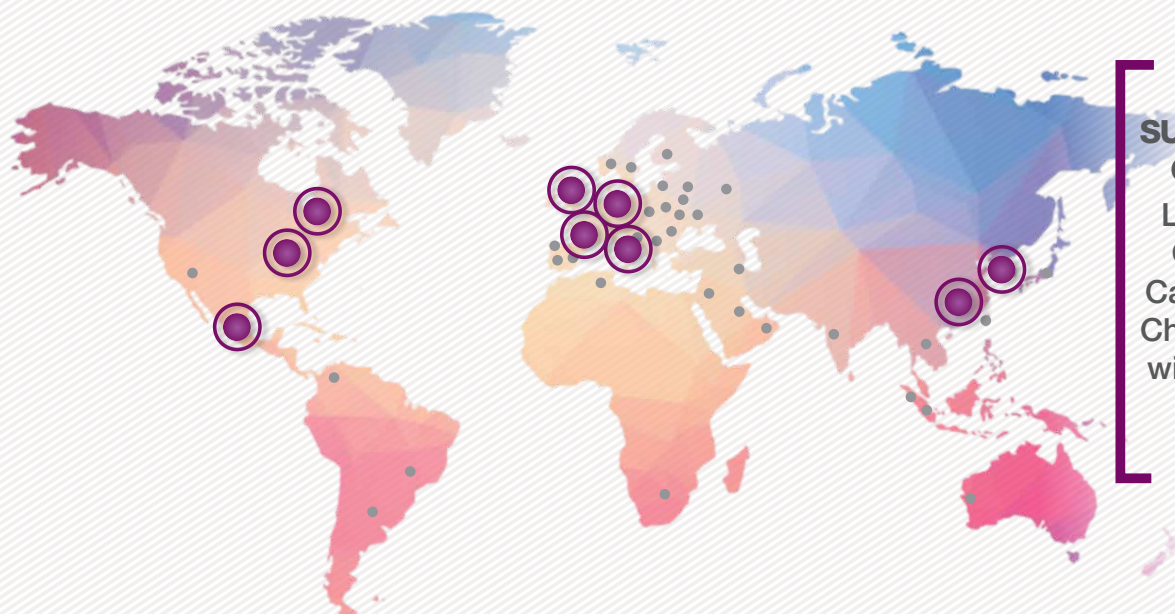
Side opening for lengthy parts



Lateral extension



Full chassis



SUPPORTING YOU ALL OVER THE WORLD

Locations in France,
Germany, Italy, UK,
Canada, USA, Mexico,
China and South Korea
with a network of over
40 distributors...

SIC MARKING, A GLOBAL SPECIALIST IN MARKING AND TRACEABILITY SOLUTIONS

SIC Marking is an international group developing permanent marking solutions and vision systems for the traceability of industrial components. SIC Marking has developed a complete range of dot peen, scribing and laser marking machines.

With 30 years of experience, SIC Marking develops traceability applications for a wide range of materials such as steel, alloys, stainless steel, titanium, aluminum and plastics.

Today we work with professionals in various industries such as: automotive, aerospace, metallurgy, mechanical engineering, plastics processing, railway, medical, construction, defense...

With an experienced, responsive and involved team, SIC Marking offers a complete range of standard products, and custom machines to meet all your traceability needs.



SIC Marking is ISO 9001: 2015 certified.



SIC MARKING
195 Rue des Vergers
69480 Pommiers - France
Tel : +33 472 54 80 00
info@sic-marking.com



sic-marking.com